



DIECI

SAFE, EASY OPERATION

DRIVING SIMPLICITY

Dieci telehandlers are easy to operate with basic functions that can be learned in seconds. The dashboard and control layout is logical. The single joystick controls of the fixed arm telehandlers are intuitive. The pilot-operated joystick allows three boom functions to operate simultaneously. A thumb button operates the auxiliary hydraulic functions for work tools requiring multiple hydraulic functions. Move the joystick forward and step on the pedal. And changing the speed transmission is a push of a button. That is as simple as it gets.

HIGHLY MANEUVERABLE

It's not uncommon for telehandlers to encounter ditches and other obstacles in areas where they need to approach walls and raise and deliver supplies. Job sites have become more congested with multiple contractors working on sites at the same time. With a Dieci, you can flip the micro lever to skate around virtually any obstacle with three steering modes: Four-Wheel Steer, the most common, turns the machine twice as fast. Front-Wheel Steer is for normal all-around and high speed use. Crab Steer moves the machine diagonally to tack closer to structures and around obstacles. And all with four-wheel drive traction. A rear axle oscillates to smooth out the bumps. An optional steering indicator is available to help align the wheels.



ALL-WHEEL STEERING



SAFETY CERTIFIED

All Dieci telehandlers are CE certified and certified to the American National Standard ANSI/ITSDF

B56.6-2005, FOPS and ROPS. All elevated work platforms have also been tested and certified to CSA Standard B354.4-02.

ATP-BEYOND LOAD

CHARTS

Imagine the potential consequences of tipping a telehandler. Dieci's ATP (Anti Tipping Protection) automated overload protection system brings peace of mind. Dieci telehandlers are used in the construction rental market and must be easy and safe to use even for inexperienced operators. ATP insures that operators cannot tip the machine and loads are well within the operational parameters of the machine. Load cells located in the axles take load measurements 60 times per second. A signal is sent to a microprocessor that automatically controls and over rides the hydraulic cylinders. As the operator moves his load away from the centre of gravity, a visual LED indicator bar displays the current load parameters. An additional safety audible alarm will also warn operators as they approach maximum lift. If the operator

CRAB STEERING



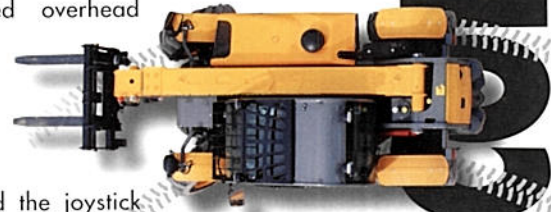
moves past the safety envelope the telehandlers hydraulic controls shut down until the load is retracted to a safe position. ATP is standard on every Dieci telehandler.

SMOOTH JOYSTICK CONTROLS

Control is light, nimble and responsive. There are minimal levers, knobs and switches. Dieci telehandlers



are designed for precise handling and excellent control. The single loader lever combines raise/lower and crowd/dump functions for easy single-handed operation. First a palm dead man lever is deployed to activate the joystick or thumb switch. This is important if you have a load lifted overhead



FRONT WHEEL STEERING

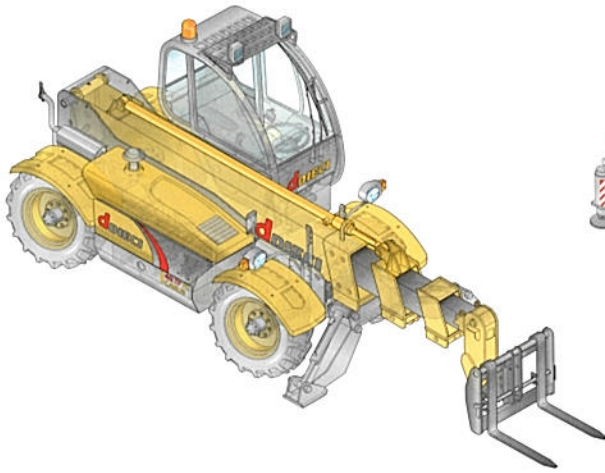


and the joystick is accidentally bumped. The joystick movements are intuitive and easy to understand. The flow sharing/proportional joystick is top of the line, silky smooth and a pleasure to operate. Coupled with a Degelman work tool, there is no end to what you can do. Up to three separate functions can be activated at once. Extend the boom out. Lift the load. Dump the bucket. An example of how one motion can save time. The speed of the joystick determines the speed of the tool. Operators run Dieci telehandlers for longer periods of time with less fatigue and operator inputs.

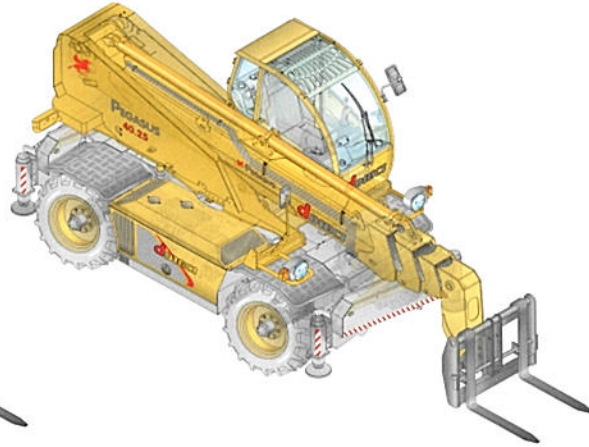
CONTROL & POWER

POWERTRAIN & TRANSMISSION

FIXED-ARM MACHINE



ROTATIONAL BODY MACHINE



DANA & REXROTH MAXIMUM TRACTION & MAXIMUM CONTROL

Dieci's open-center hydrostatic system working with Spicer axles and drive shafts puts the power to the ground. Try to get it stuck. The powerful and efficient drive system enables a Dieci telehandler to work flexibly and precisely in the most demanding situations. Dana drives are used by virtually every major off highway vehicle manufacturer. Dana has a track record for traction, steering and reliability in rough terrain. The transmission is hydrostatically powered by a premium

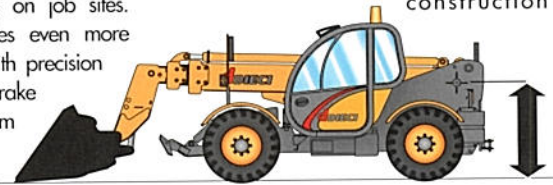
Rexroth variable displacement pump and motor. Two-speed gear changing and reverse is smooth and automatic - provided by a servo controlled electric-over hydraulic system. The planetary reduction provides ample four-wheel drive traction. The front



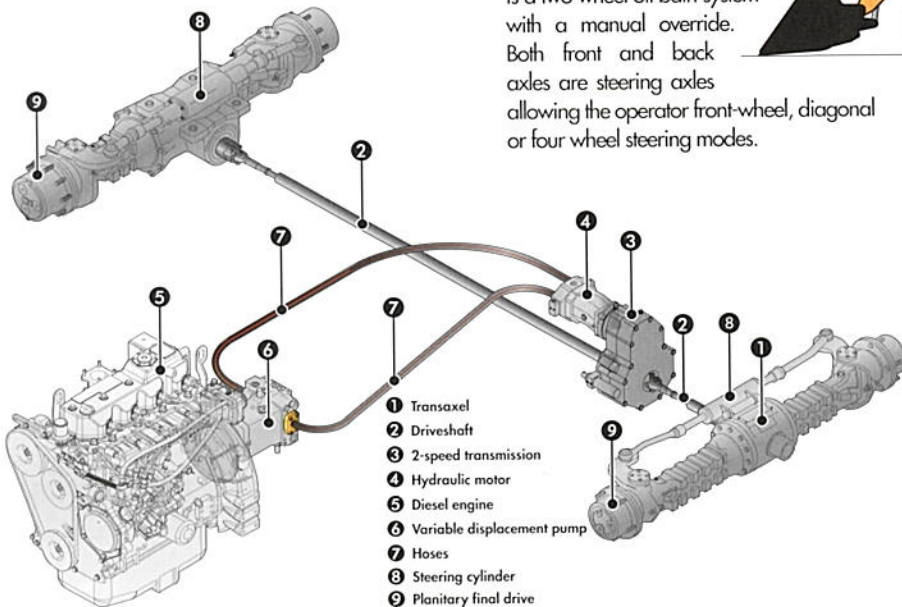
axle is rigid and the rear axle oscillates to smooth out the bumps on job sites. An inching pedal provides even more control moving forward with precision placement. The parking brake is a two wheel oil bath system with a manual override. Both front and back axles are steering axles allowing the operator front-wheel, diagonal or four wheel steering modes.

LOWER PIVOT POINT HIGHER PUSHING FORCE

Telehandlers with a lower pivot point are designed to push more and can be used with a wide scope of attachments. Dieci telehandlers are designed with high mount cabs and side-mounted engines that provide excellent 360° visibility yet provide a lower boom pivot. The tool handling capabilities of Dieci telehandlers is a must on today's demanding high-productivity construction



sites. Telehandlers have evolved from simple pick and place machines to all around versatile work horses. With the right machine you can move, lift, level and place snow, dirt, pallets, gravel, manure, bales, lumber and silage.



SAUER-DANFOSS

Vario System (VS)

The Dieci VS (Vario System) electronic hydrostatic transmission allows the operator to find the optimum speed / power / rpm ratio - great for any job! The Dieci Hydrostatic Vario System provides 4 working modes (3 modes for Agri Plus) - each designed to suit the specific application or operation.

Mode choices range from "Automotive" "Shovel" "Creeper" and "Economy". These working modes along with a forward speed potentiometer and "inching" pedal allow the operator numerous choices with which to operate the machine.

HIGH PERFORMANCE

TOP OF THE LINE HYDRAULICS

FAST, CAPABLE HYDRAULICS

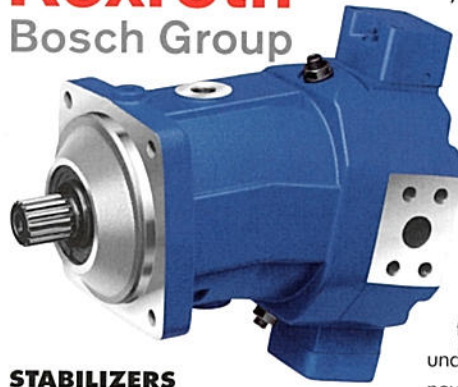
The heart of a superior telehandler is superior hydraulics. Dieci use top of the line hydraulics: variable displacement pumps, variable displacement motors, a variety of joysticks, solenoids, and control blocks. The hydraulic focus was not on the single hydraulic component but on the whole machine function. Components are



made for each other; perfectly adjusted to each other with a minimum of interfaces. Electrical, cable trays and hydraulic lines are neatly detailed and organized. This efficient hydrostatic drive system is reliable, economically efficient and the ease of operation creates a superior telehandler. Dieci pioneered the working hydraulics, electric proportional pump control systems and the flow sharing control. All joystick controls are precise and smooth. Boom control is straight forward; telescope and lift functions perform smoothly and precisely. The post spool pressure compensating on the main implement valve ensures three-function flow sharing even when valve demand exceeds pump output. Flow sharing is achieved regardless of loading on each circuit, making smooth boom movements easy even for inexperienced operators. Higher capacity hydraulic pumps are available.



Rexroth
Bosch Group



STABILIZERS

At the flip of a switch, stabilizers are quickly deployed, levelling the machine and dramatically increasing the working lift and reach envelope. Regardless of the machine being a fixed arm unit with two stabilizers or a rotational body unit with four stabilizers, setting the side outriggers is fast. One or all four stabilizers can be deployed at the same time to further increase productivity.

AUXILIARY HYDRAULICS.

A WORLD OF POSSIBILITIES.

To get the most of your Dieci machine, optional multiple hydraulic ports are recommended. The Dieci hydraulic system has 3300 psi of auxiliary pressure and up to 26 GPM of flow. At least one single auxiliary hydraulic system on telehandlers is preferred. Auxiliary hydraulics allows the use of powered attachments such as sweepers, augers and rotating and swing carriages. If the machine will be used in cleanup work, a dual-flow hydraulic system can actuate a grapple arm or thumb on a bucket to facilitate removing bulky trash and debris.

Dieci telehandlers excel at material-handling. The available auxiliary hydraulic system opens up new possibilities that tackle a wider variety of jobs. Dieci telehandlers are a productive alternative to using

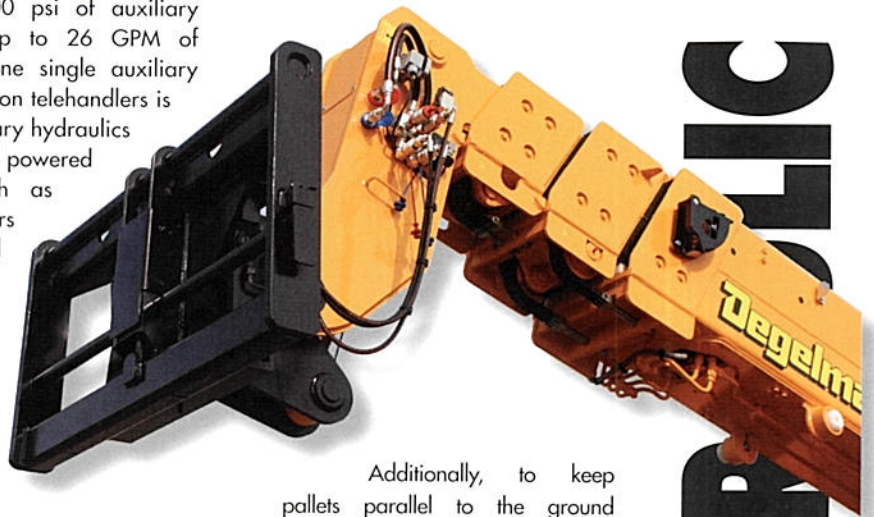
a small wheel-loader or backhoe.

As long as operators avoid being overly aggressive and keep the boom retracted when rooting and extracting material, a whole new dimension of productivity can be added without compromising the telehandler's original strengths.

The same concept holds true for the use of other attachments. Many contractors no longer feel the need to add backhoes or skid-steer loaders to their fleets to operate attachments, understanding their telehandlers can now handle augers, sweepers and even small hammers and breakers when not lifting heavy payloads.

HYDRAULICS AT A GLANCE

- Precise and smooth flow sharing/proportional joystick controls
- Hydrostatic four-wheel drive allows automotive steering with four-wheel drive traction
- Inching Pedal for sensitive load placements
- Wear-free braking and jerk-free acceleration
- Fast change of direction through variable displacement pump reversal
- High handling capacity
- Diagnostic ports on all major hydraulic components



Additionally, to keep pallets parallel to the ground traditional telehandlers use secondary master cylinders of equal displacement as the boom head cylinder. This second cylinder adds unnecessary frequently moving parts and often blocks the view of the operator. Dieci incorporates a patented design using a "cylinder within a cylinder" to increase visibility, longevity and reduce unnecessary components.

HYDRAULIC SYSTEMS

SPACIOUS MODERN CABS

Dieci cabs are comfort redefined. This is not an after thought cab. It is roomy, modern and it is not surprising that Dieci cabs are designed by an Italian car designer. They are the most driver-focused telehandler cab on the market. The fully adjustable suspension seat is as comfortable as it gets. A nicely padded arm rest and steering wheel that tilts to fit the operator makes for an easier work day. All of the normal creature comforts are standard and a Winter Comfort Kit is available.

From the quiet climate controlled cab to the right side ergonomic armrest, tilt steering column, rubberized controls, this cab is as good as they get. A wide swing-a-way door and 180° split window swing and lock into place for enhanced communication between the operator and ground crew. An overhead sunroof opens for fresh air. A chart holder puts operating information within easy reach. The engine throttle and foot brake pedals are positioned for comfortable use. Everything about the Dieci telehandler cab is designed with the operator in mind.

important. Not only are telehandlers in general enjoyable to operate, the Dieci machines are a great experience. Quiet. Ergonomic. Modern. Operators will have less fatigue.

INTUITIVE CONTROL LAYOUT

Switches have been grouped on the dashboard ahead of the joystick. Controls

are logical, visible and functional. The operator is simply pampered. Every function is neatly organized with unmatched automotive fit and finish: oversized controls, rubberized buttons and an ergonomic proportional joystick all to maximize productivity.



- | | |
|---|---|
| 1 Forward / Reverse Lever | 8 Flow Sharing/Proportional Joystick Control (4 in 1 shown) |
| 2 Dash (Fuel Gauge/Engine Tachometer w/Hour Meter/ Temperature Gauge) | 9 Stabilizer Raise/Lower Switch |
| 3 Assortment of control switches | 10 Adjustable Deluxe Suspension Seat (Air-ride Optional) |
| 4 Hi/Low Range Selector Switch (2-speed drive) | 11 Tilt Steering Column |
| 5 ATP (Anti-tipping Protection) | 12 Steering Mode Selector |
| 6 Transverse (SWAY) Levelling Switch | 13 Boom Attachment Selector |
| 7 ATP (Anti-tipping Protection) Override Button | 14 Emergency Stop |
| | 15 Boom In/Out Control |
| | 16 Auxillary Control |



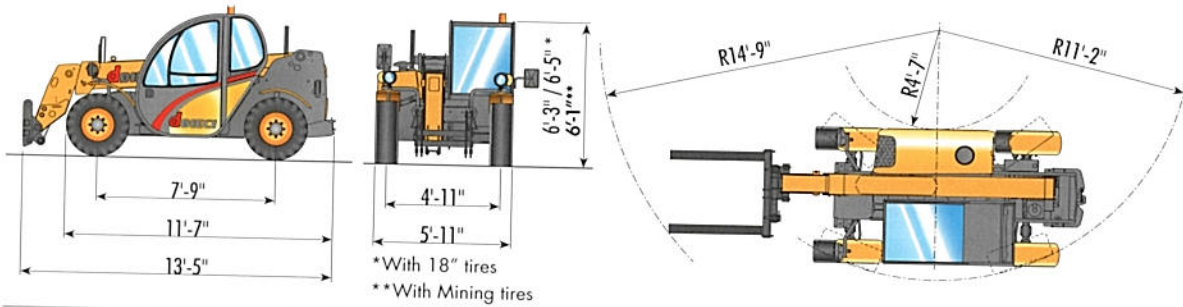
APOLLO CAB

FIXED ARM CAB

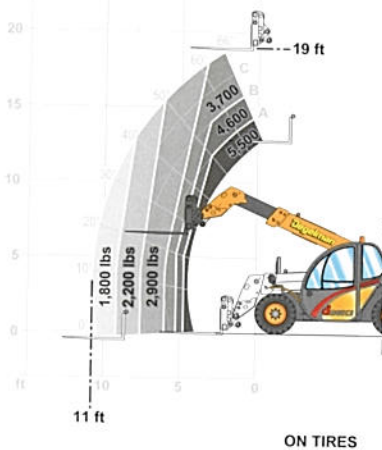
PRODUCTIVE OPERATORS

A comfortable work environment can reduce operator turnover while allowing operators to work more comfortably for longer hours. Operators can sometimes be difficult to find. While putting in longer hours, comfort is

APOLLO 25.6



MAX 5,500 lbs



SUPER COMPACT



PERFORMANCE

Maximum lifting capacity.....	5,500 lbs
Maximum lifting height	19.0 ft
Maximum reach.....	11 ft
Fork angle.....	130 °
Towing Force.....	9,891 lbf
Maximum allowable slope.....	40 %
Total empty weight.....	10,560 lbs
Max speed (18" tire).....	16mph (26 km/hr)



DRIVE SYSTEM

Hydrostatic Transmission with variable displacement pump
 Hydraulic engine with.....Automatic Adjustment
 Gear reversing.....Electro hydraulic
 Inching pedal for controlled movement
 1-speed gear box
 Electronic Throttle Governor (3 speed settings)



HYDRAULIC CIRCUIT

Gear pump at full capacity.....21 gal/min
 Max working pressure.....2901 PSI
 Flow Sharing/Proportional joystick controls.....3 in 1 or 4 in 1



DIFFERENTIAL AXLES

Steering axles.....2, with planetary reduction gears
 Type of steering.....4 wheel / crab / 2 wheel
 Front axle.....Rigid
 Rear axle.....Oscillating
 Electric Park Brake



TANK CAPACITY

Hydraulic circuit.....18 gallons
 Fuel tank.....21 gallons



ENGINE

ENGINE YANMAR - 71 hp - Natural Aspirated
 Maximum power.....71 hp at 2,500 rpm
 Type.....four-stroke direct injection diesel
 Cylinders number and layout.....4, vertical in line
 Displacement.....203 cu. in.
 Cooling system.....liquid



OPTIONAL EQUIPMENT

Air conditioning
 Skid Steer Adapter Bracket
 Hydraulic Quick Attach
 Additional Lighting Packages
 Front Glass Guard
 Additional hydraulics on boom head
 Air ride seat.....liquid



STANDARD DEVICES

CE certified, ANSI/ITSDF B56.6.205, CSA Standard B354.4-02
 Closed soundproof cab ROPS - FOPS, with heating.
 One set of hydraulic couplers for on boom head
 Self-locking differential (limited slip 45%) on front axle
 ATP (Anti Tipping Protection) with block for hazardous movements



TIRES

Standard (INDUSTRIAL LUG).....12-16.5" N.H.S.

Optional (INDUSTRIAL LUG)....12.0/75-18" TR-03

Optional (MINING TIRE).....28x12.5-15"





Agri Farmer 28.7
21' / 6,200lbs

Agri Farmer 26.6
20' / 5,800lbs

Agri Farmer 28.9
29' / 6,200lbs

Agri Farmer 30.7
21' / 6,600lbs

Agri Farmer 30.9
29' / 6,600lbs

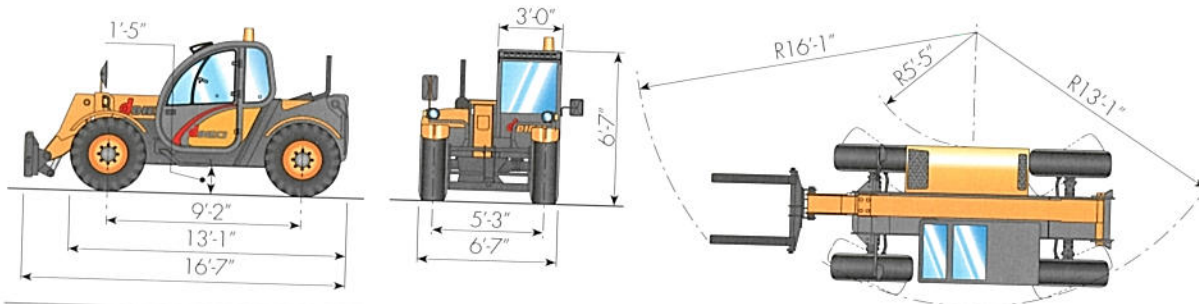
AGRI FARMER 28.7

The Agri Farmer is the most common sized machine used in the Poultry Industry. The Agri Farmer is a step up from the Apollo exceeding it in lift height, capacity and horsepower while maintaining a low profile. Like all Dieci telehandlers, they are multi-function machines and can be used for many operations.

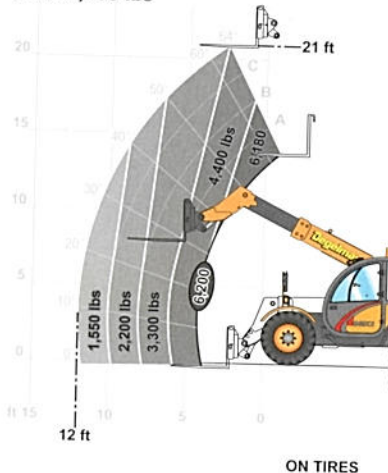
Operators who own the Agri Farmer do not know what they would do without them. There is endless amount of tasks that can be handled that no other farm tool can handle. Telehandlers are a common workhorse on many European farms and North American farmers are starting

to see why. The Agri Farmer can lift as high as 21 feet twice the height of a tractor. The machine is nimble and can move in directions normally not possible and with the four-wheel drive power. Degelman makes all the options from pallet forks to buckets to bale forks all with a slick hydraulic Quick-Tach system. Stay in the cab while changing attachments any attachment. Degelman also makes an adaptor to convert the Agri Farmer to all Skid Steer attachments as well.

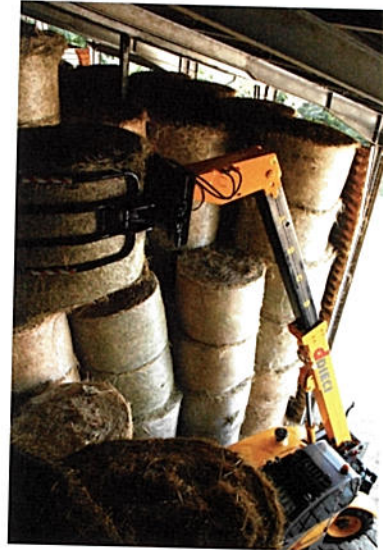
AGRI FARMER 28.7



MAX 6,200 lbs



ON TIRES



PERFORMANCE

Maximum lifting capacity.....	6,200 lbs
Maximum lifting height.....	21 ft
Maximum reach.....	12 ft
Fork angle.....	130°
Towing Force.....	16,410 lbf
Breakout Force.....	12,814 lbf
Maximum allowable slope.....	40%
Total empty weight.....	13,200 lbs
Max speed.....	22mph(35 km/hr)



DRIVE SYSTEM

Hydrostatic Transmission with variable displacement pump
 Hydraulic engine.....Automatic adjustment
 Gear reversing.....Electro hydraulic
 Inching pedal for controlled movement
 Servo controlled 2 speed gearbox



HYDRAULIC CIRCUIT

Gear pump at full capacity.....23 gal/min
 Max working pressure.....3,336 PSI
 Flow Sharing/Proportional joystick controls.....4 in 1



DIFFERENTIAL AXLES

Steering axles.....2, with planetary reduction gears
 Type of steering.....4 wheel / crab / 2 wheel
 Front axle.....Rigid
 Rear axle.....Oscillating
 Electric Park Brake



TANK CAPACITY

Hydraulic circuit.....34 gallons
 Fuel tank.....16 gallons



ENGINE

PERKINS Turbo-Charged 1104D-44T
 Maximum power.....101 hp at 2,200 rpm
 Type.....four-stroke direct injection diesel
 Cylinders number and layout.....4, vertical in line
 Displacement.....274 cu. in.
 Cooling system.....liquid



OPTIONAL EQUIPMENT

Air conditioning
 Skid Steer Adapter Bracket
 Hydraulic Quick Attach
 Air Ride Seat
 Additional Lighting Package
 Sun Screen
 Front Glass Guard
 Additional Hydraulics on Boom Head



STANDARD DEVICES

CE certified, ANSI/ITSDF B56.6.205, CSA Standard B354.4-02
 Closed soundproof homologated cab ROPS - FOPS, with heating
 Hydraulic coupler on boom head
 Self-locking differential (LIMITED SLIP 45%) on front axle
 ATP(Anti-tipping Protection) with block for hazardous movements

atp



TIRES

Standard (INDUSTRIAL LUG).....12.5/18"



LOW PROFILE AG

"With a lift capacity equalling medium sized pay loaders, our Agri Plus can operate that 4 yard bucket with heaping scoops of the heaviest feedlot manure you can find and still load the spreader outside the pen. It's only half the weight of many pay loaders and this machine can load tall sided mixer wagons and manure spreaders that extended reach pay loaders struggle with to get high enough.

When operating on side hills, the machine remains steady and we love the four wheel steer compared to tippy articulated pay loaders.

The Agri Plus will load in 5 scoops compared to 17 to our tractor with front end loader. We like the road speed and quick hydraulics and use this machine everyday in our operation."

Don Bowyer & Daryl Paskewitz

Sunny Slope Cattle Co. / Maple Creek, SK



Agriplus 40.7vs
24' / 9,000lbs



Agriplus 38.9vs
29' / 8,500lbs



Agriplus 38.9ps
29' / 8,500lbs



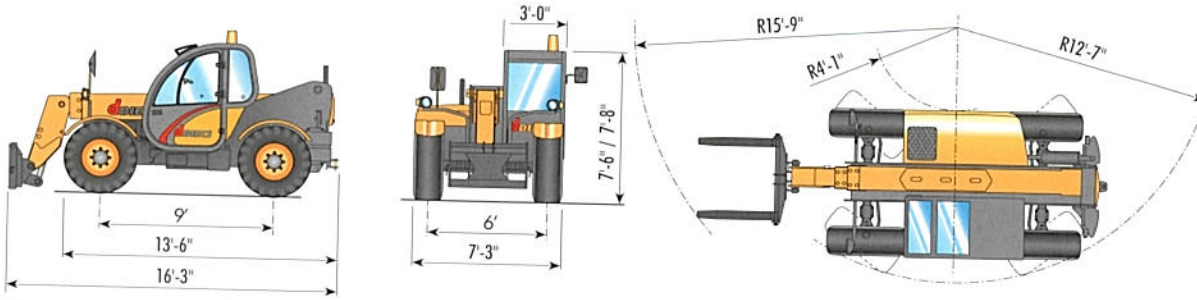
Agriplus 40.7ps
24' / 9,000lbs

AGRI PLUS 40.7

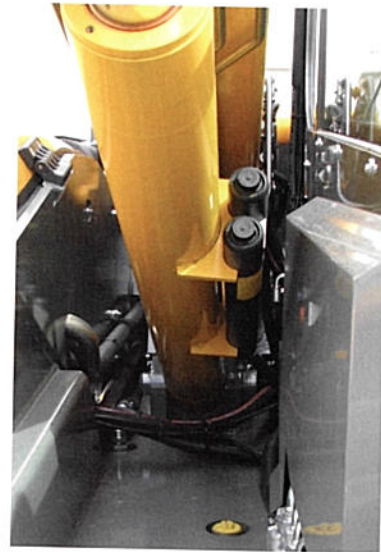
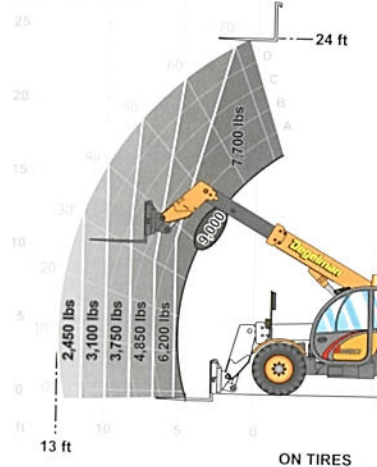
The perfect machine for most agricultural operations! Super lifting capacity of 9,000lbs and a reach height of 24 feet no farm job is too big. Equipped with a powerful IVECO 128hp Turbo After-cooled 4 cylinder diesel engine coupled with your choice of a Clark (Dana/Spicer) Power-shift transmission or a Sauer Danfoss Vario System "VS" hydrostatic transmission. Each provide a smooth transition from forward to reverse

and reach a maximum travel speed of 25 MPH. Easy clean and fold down radiator in rear with reversing fan. A tight turning radius provides excellent maneuverability in confined spaces such as feed lots and dairy operations. Two wheel, four wheel and crab steering are standard on every machine.

AGRI PLUS 40.7 VS



MAX 9,000 lbs



HEAVY LIFT AG



PERFORMANCE

Maximum lifting capacity.....	9,000 lbs
Maximum lifting height.....	24 ft
Maximum reach.....	13 ft
Fork angle.....	130°
Towing force.....	16,410 lbf
Breakout Force.....	12,814 lbf
Maximum allowable slope.....	40 %
Total empty weight.....	15,840 lbs
Max speed.....	25 mph (40km/hr)



DRIVE SYSTEM

4 Speed Powershift or "VS" Vario System (3 Drive Modes)



HYDRAULIC CIRCUIT

Gear pump at full capacity.....	26 gal/min
Max working pressure.....	3336 PSI
Flow Sharing/Proportional joystick controls.....	4 in 1



OPTIONAL EQUIPMENT

- Air Conditioning
- Rear Hydraulics
- Hydraulic Reversing Fan
- Hydraulic Quick Attachment
- Additional Hydraulic Pump for faster boom speed and larger hydraulic volume
- "Easy Ride" Boom Suspension
- Air Ride Seat
- Assorted Degelman-Made Buckets & Attachments
- Additional Lighting Packages
- Sun Screen



DIFFERENTIAL AXLES

Dana/Spicer steering axles...2, with 6:1 planetary reduction gears
 Type of steering.....4 wheel / crab / 2 wheel
 Front axle.....Rigid
 Rear axle.....Oscillating
 Electric Park Brake



ENGINE

IVECO NEF-Turbo After-cooled (Tier 3)
 Maximum power.....128 hp at 2,200 rpm
 Type.....four-stroke direct injection diesel
 Cylinders number and layout.....4, vertical in line
 Displacement.....274 cu. in.
 Cooling system.....liquid



TANK CAPACITY

Hydraulic circuit.....37 gallons
 Fuel tank.....25 gallons



STANDARD DEVICES

CE certified, ANSI/ITSDF B56.6.205, CSA Standard B354.4-02
 Hydraulic coupler for possible accessories on boom head
 Closed soundproof homologated cab ROPS - FOPS, with heating
 Self-locking differential (LIMITED SLIP 45%) on front axle
 Road Light Package (head lights, tail lights, signal flashers, brake lights and the flashing strobe)
 ATP(Anti Tipping Protection) with block for hazardous movements

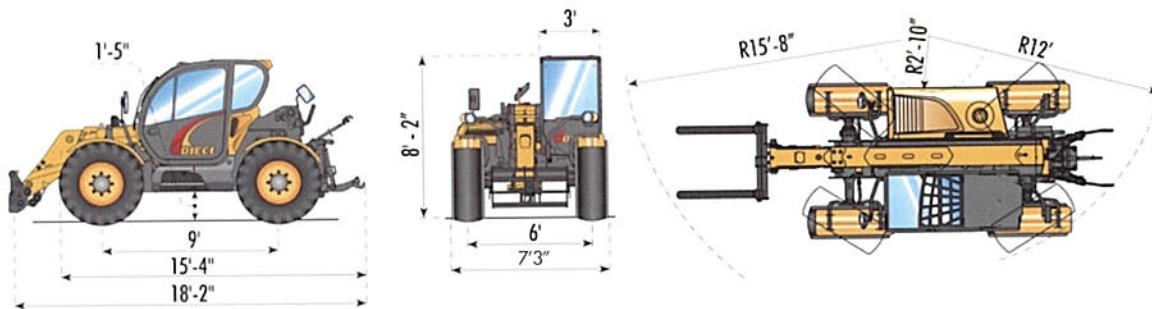


TIRES

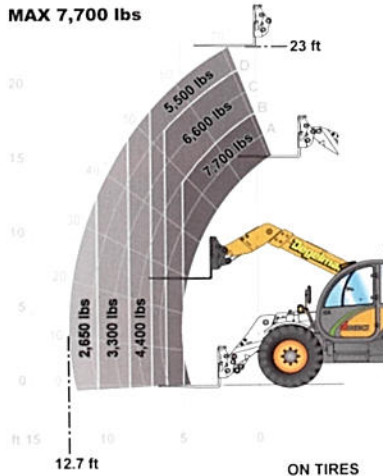
Standard (OVERSIZED).....445/65-22.5"



AGRI TECH 35.7 VS



MAX 7,700 lbs



PERFORMANCE

Maximum lifting capacity.....7,700 lbs
 Maximum lifting height.....23.0 ft
 Maximum reach.....12'-7"
 Fork angle.....146°
 Towing Force.....13,220 lbf / 6.0 daN
 Maximum allowable slope.....75%
 Total empty weight.....16,300 lbs
 Max speed (22.5" tire).....25 mph (40 km/hr)



DRIVE SYSTEM

(4 Drive Mode)Vario System Hydrostatic
 Gear reversing.....Electro hydraulic
 Electronic inching pedal.....Automatic/Loader/Creeper/Eco.



HYDRAULIC CIRCUIT

Gear pump at full capacity.....24 gal/min (31 gal/min optional)
 Max working pressure.....3,480 PSI / 240 bar
 Flow Sharing/Proportional Joystick Controls.....4 in 1



DIFFERENTIAL AXLES

Dana Spicer Steering axles.....2, with planetary reduction gears
 Type of steering.....4 wheel / crab / 2 wheel
 Front axle & Rear axle.....Levelling/ Oscillating
 Oil bath on the front and rear axle with servo brake
 Electric Park Brake.



MECHANICAL 100HP PTO 1000 or 540

Electronic command with position, effort, floating, anti-dumping control function.
 Lifting capacity.....Cat. 2 - 8,820 lb (4000 kg)
 Rear distributors.....3 (on request)



TANK CAPACITY

Hydraulic circuit (total).....26.4 gallons / 120 litres
 Fuel tank.....31 gallons / 140 litres



ENGINE

IVECO NEF - Turbo After-cooled (Tier 3)
 Maximum power.....128 hp at 2,200 rpm
 Type.....four-stroke direct injection diesel
 Cylinders number and layout.....4, vertical in line
 Displacement...274 cu. in. (4485 cm³)
 Cooling system.....liquid
 Block Heater.....Standard



OPTIONAL EQUIPMENT

3PT Hitch
 Air Conditioning
 Rear Hydraulics
 Hydraulic Reversing Fan
 Hydraulic Quick Attachment
 "Easy Ride" Boom Suspension
 Additional Lighting Package
 Air Ride Seat
 Assorted Degelman-made Buckets & Attachments
 Sun Screen



STANDARD DEVICES

CE certified, ANSI/ITSDF B56.6.205, CSA Standard B354.4-02
 Hydraulic socket for possible accessories on boom head.
 Closed soundproof ROPS-FOPS approved driver's cab, with heating.
 Self-locking differential (LIMITED SLIP 45%) on front axle
 Electric steering control.
 High efficiency cyclone filter.
 Electric window winder.
 Hydraulic levelling.
 Road Light Package (head lights, tail lights, signal flashers, brake lights and the flashing strobe)



ATP (Anti Tipping Protection) with block for hazardous movements.



TOWING CAPACITY (on request)

Towing without brake.....3 Ton / 6,600 lb
 Inertia braking.....6 Ton / 13,200 lb
 Mechanical brake.....5 Ton / 11,000 lb
 Hydraulic/pneumatic brake.....20 Ton / 44,000 lb



ADDITIONAL OPTIONS & ACCESSORIES

Sun Screen - Front Glass Guard - Block Heater - Radio with CD player - Height adjustable rear tow bar - Pneumatic braking - Hydraulic braking - Agricultural tractor approval- Tow-bar approval (Max. 20 T) - Additional Hydraulic Pump for faster boom speed and hydraulic volume.



TIRES

Standard (OVERSIZED).....445/65-22.5"

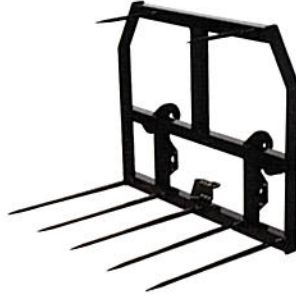


ALL PURPOSE AG

FORKS & RELATED ATTACHMENTS

Dieci pallet forks are a hook-on style featuring a standard 48 inch fork length. Extensions can be added increasing the fork length to 76 inches. For better load stability an extra wide 72 inch fork is available. Bale Spears are made from an extremely high tensile material. A small profile design allows

for good visibility. Moving, lifting, stacking bales is extremely easy when using a manoeuvrable Dieci telehandler. Bale Grabbers are perfect for use in heavy baled silage.



SQUARE BALE FORK

Lift square bales stacked two high.



FORK GUARD

This is designed as a height extension to accompany our Fork Carriage. If you find you're lifting taller loads, using this extension lets you lift them more securely, with more support for higher stacked loads so they don't fall back.



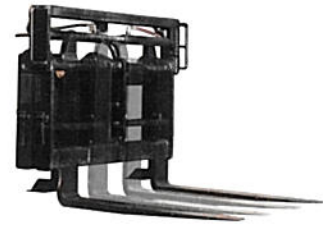
FORK WITH TWO SWIVEL TEETH (BALE FORK)

If you're moving a lot of bales, this attachment will do it for you. Lightweight design coupled with durable strength.



ROUND BALE FORK

If you're moving a lot of bales, this attachment will do it for you. Lightweight design coupled with durable strength.



HYDRAULIC FORK POSITIONING

Hydraulically slide the forks side to side up to 8". Position the forks to accommodate different widths of pallets or material without getting out of the cab.



FORK EXTENSIONS

Ideal for lifting hard to reach loads such as flatbed trucks. Increases the length of standard forks up to 76 inches.



FORK CARRIAGE

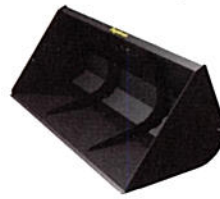
Floating forks are attached to the end of the boom head providing either a 46 or 51 inch wide stance (depending on the machine). By adding the optional fork carriage and hydraulic quick attachment the operator will never have to get out of the cab to hook up. A 72 inch wide Fork Carriage is also available for better load stability.

FORKS & SPEARS

BUCKETS, GRAPPLES & BLADES

Although compact in size, Dieci delivers a very impressive breakout force when fitted with a bucket and easily competes with the best skid steers on the market. As the largest industrial dozer blade manufacturer in the world, Degelman has a vast array of material handling solutions of different sizes, capacities and widths including: four-way dozer blades, tripping blades (ICEBREAKER), containment

blades (STRONGBOX), light weight multi-winged blades (SPEEDBLADE) as well as an array of buckets and grapples. All are custom designed to fit onto Dieci carriages.



LIGHT MATERIAL BUCKET

The material buckets are available in a variety of sizes all designed to fit Dieci Telehandlers.



EXCAVATING BUCKETS (TEETH OPTIONAL)

Perfect for dirt and snow removal for any industry. And because it's on one of our Dieci Telehandlers, you can do more and reach higher.



POTASH MINING BLADE

Degelman made, under belt blade for cleaning spilage from under potash conveyor belt.



8' GRAPPLE BUCKET

The Grapple Bucket is designed for moving silage and manure. We also discovered it works really well for picking up and moving bales. Perfect for farms and feedlots.



CLAMSHELL BALE HANDLER

Strong, secure and effective as the day is long, this attachment is perfect for large feedlots. The extended vertical sides of the Clamshell Bale Handler means you can move even more bales or silage, faster.



BALE HANDLER

Excellent for producers who move wrapped or baled silage. Strong and easy to use, our Bale Handler moves silage and stacks large bales securely.



SPEEDBLADE

Move volumes of snow quickly and easily. Hydraulically open the blade to its maximum width for large or small snow drifts or fold the wings in to move and contain high volumes of snow. Highly maneuverable—get in and out of tight spaces easily. Available in 15 foot and maximum 18 foot widths.



STRONGBOX BOX BLADE AND STRONGBOX ADAPTER PLATE

This box blade is a simple, strong and effective tool for high volume snow removal. Double-skin construction, reinforced high volume side plates, reversible skid shoes, and a durable high density rubber cutting edge.



UNIVERSAL SKID STEER ADAPTER BRACKET

Take advantage of your skid steer attachments by converting the Dieci mount with A Universal Skid Steer Adapter Bracket.

BUCKETS & GRAPPLES

JIBS, TRUSS BOOMS, HOOKS & WINCHES

Jibs can be outfitted with winches capable of lifting up to five tons.

The Truss Boom provides an extra reach from 4'4", 8'2" to 14'10" to lift and place items such as building roof trusses. Hooks compliment the machine on any jobsite. Winches allow for more accurate placement of loads. Loads can be placed below ground or over obstacles. All attachments including

winches, truss booms and hooks integrate with the Dieci ATP (Anti Tipping Protection) for safe worry-free operation.



WINCH

Able to winch heavy loads and lift them where you need them. Available with or without cable guide. In 2.5 ton, 3.8 ton and 5 ton sizes integrated with the ATP system for added safety.



HOOK

An old standard on a versatile machine. Maneuver and carry large loads up high. Just take the forks off and put the hook on. It's easy to change over and easy to use.



JIB WITH HOOK

If you need a longer extension to move material through windows or openings on construction sites, this 3'6" Jib with hook will do just the job. Just take the forks off and put this attachment on and you're good to go.



GIRAFFE NECK JIB WITH HOOK

This attachment allows you to move large flat material, such as sheetrock, safely and easily. Its arm reaches out far enough so any flat material has a reduced chance of touching the main stay and being damaged.



TRUSS BOOM WITH HOOK 4'4", 8'2" & 14'10" LENGTHS

If you need an extension to move material into openings onsite, then this is the attachment to get. Similar to our jibs, just take the forks off and attach the 4'4" (2 ton), 8'2" (1.2 ton) or 14'10" (0.6 ton) truss boom with hook, quickly and easily.



TRUSS BOOM WITH WINCH 4'4", 8'2" & 14'10" LENGTHS

Have the ability to reach and extend with the added benefit of a winch. Designed to give more versatility to anyone in the construction industry. It's strong, durable and reliable. Available in 4'6" (2 ton), 8'2" (1.2 ton) or 14'10" (0.6 ton).



LOG GRAPPLE

Made to move a lot of logs at once and lift them high. Depending on the diameter of the logs being moved, the Log Grapple attachment can make short work of any job.



ORANGE PEEL GRAB WITH 5 TEETH

Typically used for clamping and lifting debris.



LOG HANDLING CLAMP

Made for the logging industry, the Log Handling Clamp is one of the strongest, most reliable log handling attachments you'll find.



DRUM GRIP

For the construction and oil & gas industries, this attachment gives you the ability to lift heavy drums up to sites or to stack them wherever you wish with confidence. Strong and with a tough grip that doesn't let go.

JIBS BOOMS HOOKS