



Ross Equip. Ltd Since 1943

DAVE ROSS Equip. Ltd.

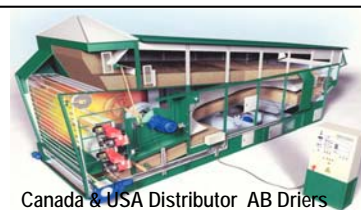
RR63-Hwy49 Box 100 Spirit River, Ab. T0H-3G0

Ph: 780-864-3731 Fax: 864-3468

1-800-661-7401

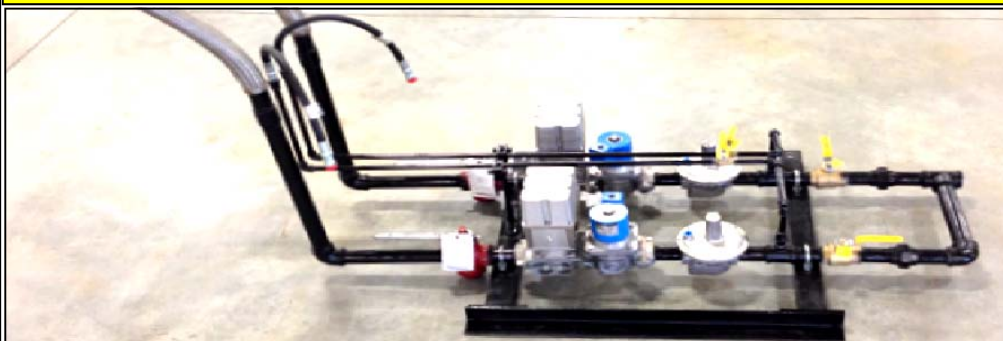
alross@rossequip.ca

warren@rossequip.ca



Canada & USA Distributor AB Driers

Required uncontaminated Propane vapour supply for the AB DF22 Grain Drier Equip. 6.2 Quotes, 19.1 19.08.14 Info Gas Train



x 2

The above Riello Gas Train and Burners are the most Efficient Gas Systems on the Market today, BUT they will not burn SKUNK OIL from the bottom of PROPANE TANKS. It is imperative that you SUPPLY CLEAN UNCONTAMINATED GAS or PROPANE VAPOR to this Gas Train at 5 psi flowing 6 mbu of protected gas pressure. If the Gas Train gets contaminated with Oil the 4 VALVES & 2 REGULATORS cost \$6,200 to replace and are NOT covered by Warranty.

The AB DF22, Drier is equipped with 2-Riello RS70M modulating 3.2mbtu burners for a total of 6.4mbtu, while the Drier is rated (in Saskatchewan) for 5 mbtu.

The RS70M Burner and its GAS TRAIN are certified as a unit under the c UL us listing Certificate Number 20120202-MP3252,
Applicable Requirements CSA 3.8-2014 Gas-fired equipment for drying farm crops.
CSA B149-10 Code for the Field Approval of Fuel-Related Components on Equipment

PLEASE SUPPLY THE FOLLOWING INFORMATION and SIGN AT THE BOTTOM

Name of GAS or Propane Supplier _____ address _____

Phone number _____ email _____

Installers Name _____ Cell _____

Permit number _____ for the Gas or propane system.

Examples of Certified Propane supply systems are on Pages 4, 5, 6, attached.
I understand it is my responsibility to provide clean uncontaminated Gas or PROPANE VAPOUR for the Gas Train on my New DF22 AB grain drier at 5psi of protected gas pressure flowing 6mbu.

Date _____ 2019 Cell _____

Signed x _____ address _____

1 PSI = 27.7 inch WC
 1 1/2" BURNER HOSE
 Burner Pressure
 7" Water column=
 about 1/4 psi
 = to normal household
 NG pressure

325.3.33.0032
 C5852618
 To Pilot lite Regulator
 Max 5psi

HWV4055A1031
 C5851011
 ACTUATOR
 C5706128 1/4" BALL VALVE

HWV4297A1013
 C5850441
 Solenoid Gas Valve
 Max 5psi
 HWC6097A1020
 LGP Switch
 Max 5psi

2100-1212-0007
 C5852644
 Regulator Max 10 psi
 The Reg is turned down
 from 5 psi to 7" to 9" WC, or
 1/4 psi for the burners. but the
 pilot lite reg requires 5 psi so
 it takes 5 psi gas before the
 regulator.

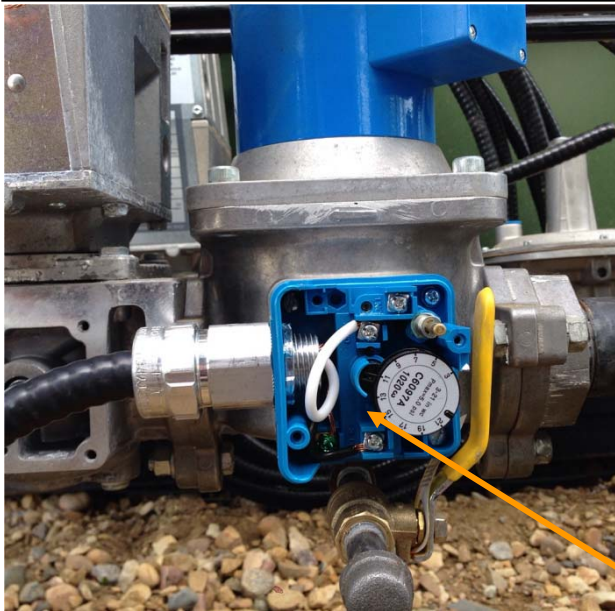
We Buy the Burners & this
 Gas Train as 1 certified unit
 from RIELLO.
 The Gas Train is Certified with
 Burners by RIELLO for 5 psi.

Therefore 5 psi of protected
 gas pressure to flow 6mbtu
 is REQUIRED TO MEET CODE



4 CSA approved flex hoses supplied.
2 for burners & 2 for pilot lites

P 3





Ross Equip. Ltd Since 1943

DAVE ROSS Equip. Ltd.

RR63-Hwy49 Box 100 Spirit River, Ab. T0H-3G0

Ph: 780-864-3731 Fax: 864-3468

1-800-661-7401

alross@rossequip.ca

warren@rossequip.ca



P 4

Canada & USA Distributor AB Driers

Requires Uncontaminated Propane vapour from the Top of the Tank for the DF22 Grain Drier



#PP2010T

DRE 8 OH

\$2,000 ea

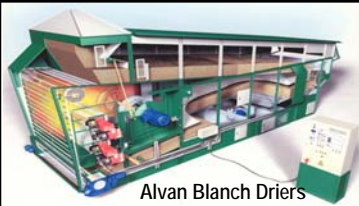
**Example of a certified
Propane Supply for a
DF22 Alvin Blanch
Grain Drier
Ken & Matt Bakanec
Kerroberts, SK
Installed in 2019**

This system is at Ken & Matt Bakanec, Kerrobert Sask Ken Cell 306-463-8567 Matt C 834-8267
CLEAN Propane vapour feeds from the top of the tanks in cold weather up & beyond -25 C

These 110V Tank Heaters were installed by Can Gas Propane

Dave ROSS Equip can supply these custom built thermostatic CSA heaters for 1,000 gal tanks,
from inventory. . Ph: 780-864-3731 or alross@rossequip.ca





Alvan Blanch Driers

DAVE ROSS Equip. Ltd.

RR63-Hwy49 Box 100 Spirit River, Ab. T0H-3G0

Ph: 780-864-3731 Fax: 864-3468

1-800-661-7401

alross@rossequip.ca

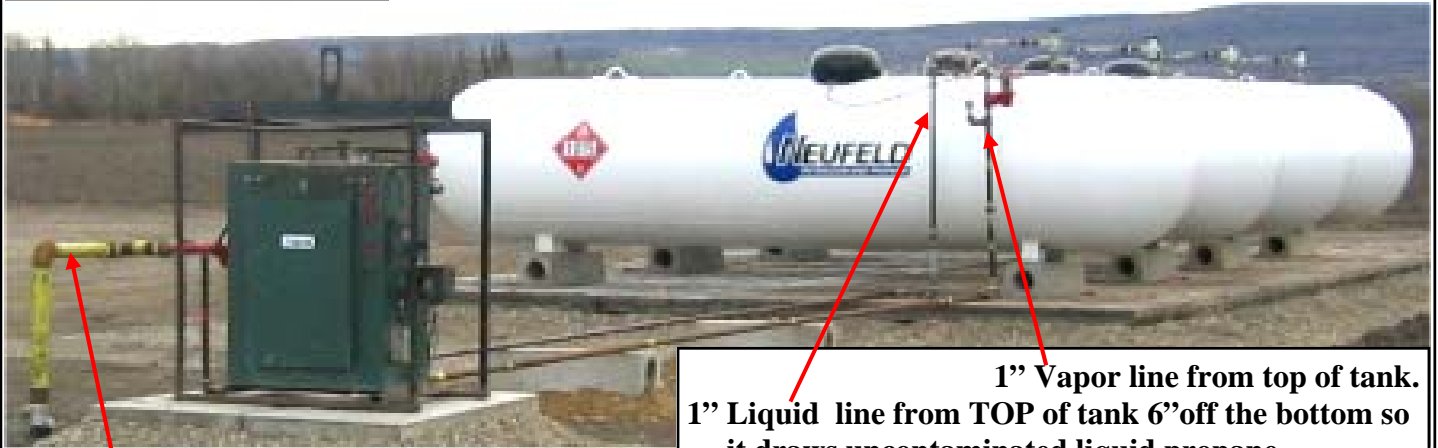
warren@rossequip.ca



Ross Equip. Ltd Since 1943

BULLETIN 11.26.2016

Example of a certified Propane supply for Grain Drier Equipment



1" Vapor line from top of tank.

1" Liquid line from TOP of tank 6" off the bottom so it draws uncontaminated liquid propane.

NOTE THEY DO NOT DRAW Liquid Propane from the bottom of the TANK.

2" Vapor line to the drier @ 20 psi.



1" Vapor line from top of tank.

1" Liquid line from top of tank 6" off the bottom so it draws uncontaminated liquid propane.

“NOTE” There was a permit pulled when this system was installed by a Class A gas fitter & was inspected by Permit Pro when the job was completed.

J. YORK Bonanza AB Installed in 2009

Designed by Melf Jessen a Class A gas fitter.

I talked to Melf today & he is open to consult and advise on a Propane system like this.

His cell # is 1-250-219-8128.

Fisher Pressure Relief Valve set at 8-9 psi relief pressure, vented to opposite side from the burners

Fisher 630 reg from 20 psi to 5 psi vented

20 psi 2" line from the Vaporizer



Example of a certified Propane supply for Grain Drier Equipment



“NOTE” If you have 4-1000 gal Propane Tanks Equipped with Tank Heaters, you don't need a Vaporizer but you must draw the Propane Vapor from the top of the Tanks, so you DON'T get any Skunk OIL Contamination from the bottom of the tanks. Nov 22/18 Barry 306-463-8567



Example of a certified
Propane Supply for a
DF22 Alvin Blanch
Grain Drier
Spring Valley Colony
Brandon, MB
Installed in 2011





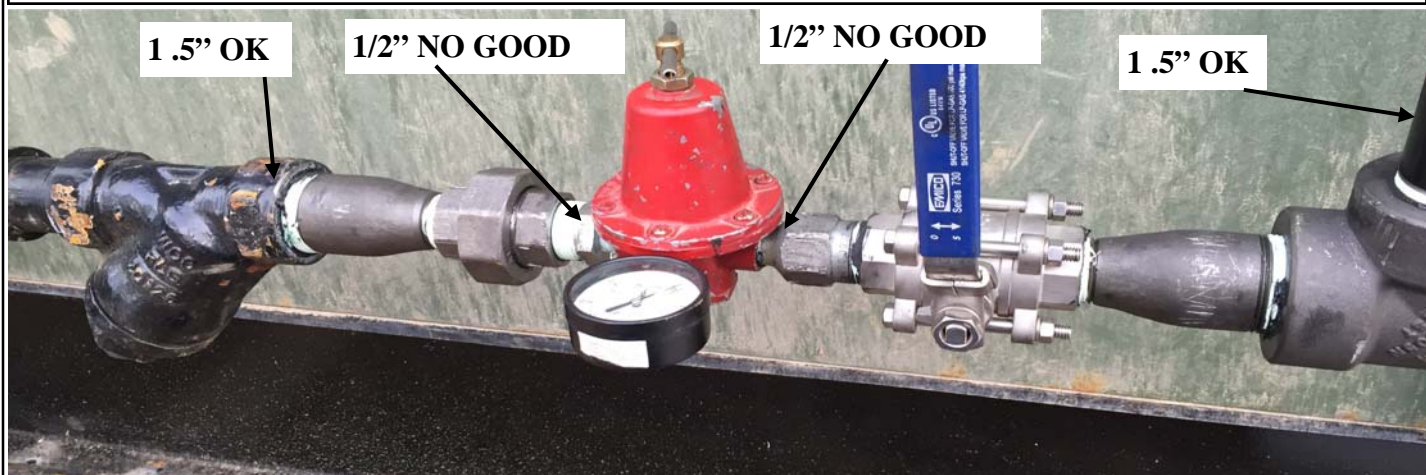
Alvan Blanch Driers

DAVE ROSS Equip. Ltd.
 RR63-Hwy49 Box 100 Spirit River, Ab. T0H-3G0
 Ph: 780-864-3731 Fax: 864-3468
 1-800-661-7401
 alross@boomspraycanada.com



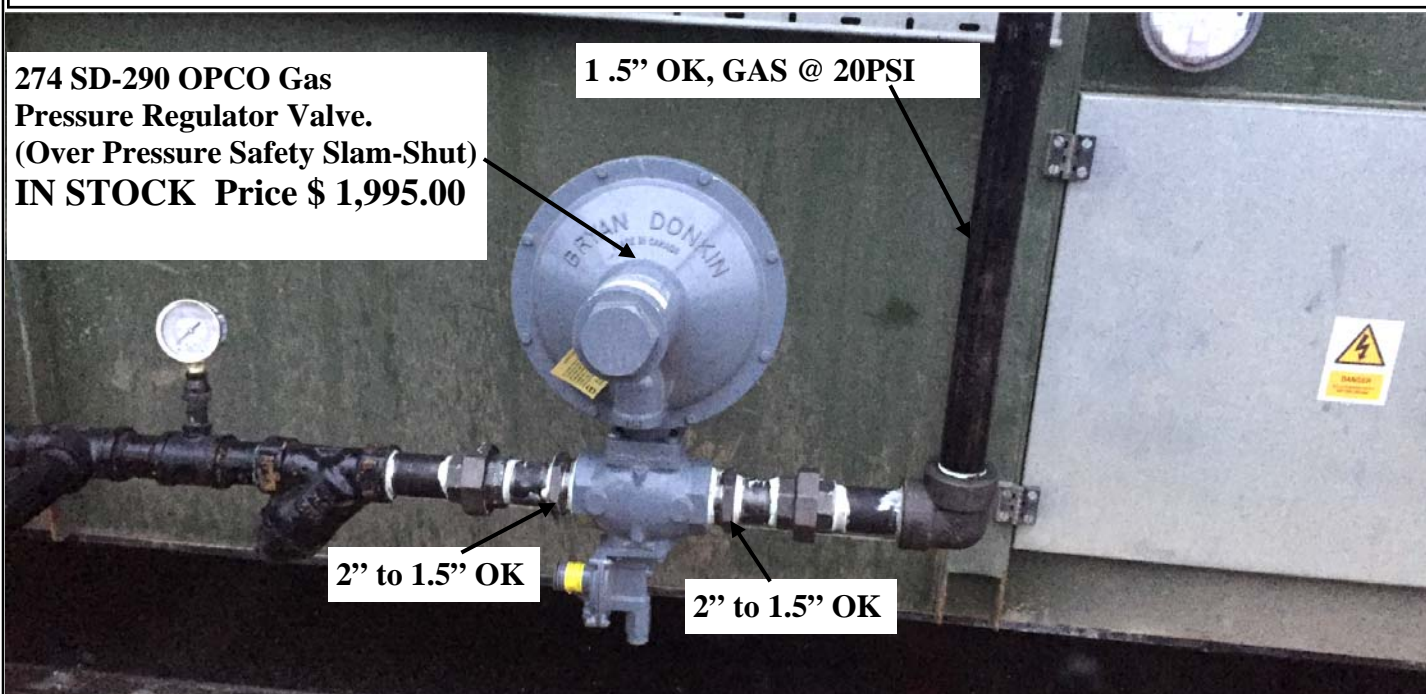
Ross Equip. Ltd Since 1943

BULLETIN 11.22.2016 TEXT to all Riello Burner owners using Nat/Gas or Propane



Above is Not a Adequate Gas hookup for Nat/Gas nor Propane. There was 5 psi as we requested but Not Enough gas Volume to even start 1 burner. We need 6.4 mbtu @ 5 psi.

274 SD-290 OPCO Gas Pressure Regulator Valve. (Over Pressure Safety Slam-Shut) IN STOCK Price \$ 1,995.00



Above is a Good Gas hookup for Nat/Gas or Propane if the 274 SD - 290 OPCO (Over Pressure Safety Slam - Shut) Gas Pressure Regulator Valve is used. Inlet pressure **MUST** be 20 psi in to supply 5 psi out @ 6 to 12 mbtu. Less than 18 - 20 psi will not work with this valve.

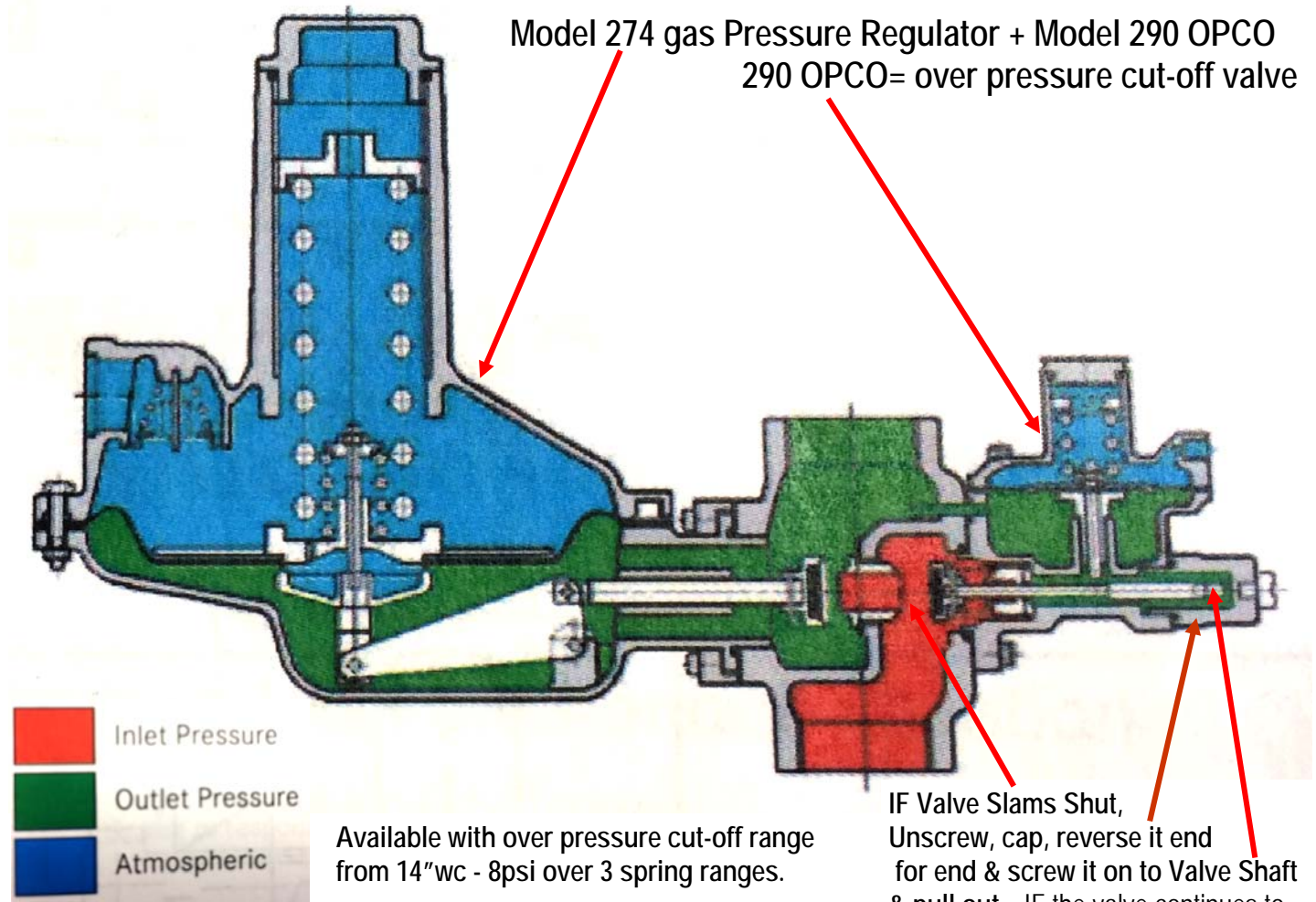
This Drier is setup on Propane with a 80-40 Vaporizer (4-8 mbtu capacity). 3/4" High Pressure liquid line from the Top of the Propane tanks to the Vaporizer. 1.5" Steel line from the Vaporizer at 18-22 psi to the 274 SD-290 OPCO Slam - Shut. Inlet pressure to this valve **MUST** be 20 psi at the inlet of the Slam Shut to supply 5 psi out @ 6 to 12 mbtu. Less than 18 - 20 psi will not work with this Slam Shut. **"NOTE" YOUR GAS INSTALLER CAN SUPPLY PROPER VALVES TO Supply 5psi of protected gas pressure to flow 6mbtu.** This is just a option that we have available.

Model 274 gas Pressure Regulator takes 20psi inlet pressure down to 5psi outlet pressure while the 290 (OPCO) over pressure cut-off valve provides the protected gas pressure of 5psi.

OPTION This dual regulator setup takes 20 psi down to 5 psi & flows 5,880 mbh x 1000 btu = 5,880,000 btu = 5.88 mbtu which is lots for the DF22 drier. 1 mbh = 1000 btu

20 psi down to 5 psi & flows 5,880 mbh x 1000 btu = 5,880,000 btu = 5.88 mbtu req 1 for 2 - 3mbtu burners
 15 psi down to 5 psi & flows 4,800 mbh x 1000 btu = 4,800,000 btu = 4.80 mbtu req 2 1-for each - 3mbtu burner
 10 psi down to 5 psi & flows 3,600 mbh x 1000 btu = 3,600,000 btu = 3.60 mbtu req 2 1-for each - 3mbtu burner

CHECK WITH YOUR GAS MAN he may have a cheaper way to provide 5 psi of protected gas pressure to flow 6 mbtu at the gas train.



Unscrew, cap, reverse it end for end & screw it on to Valve Shaft & pull out,

msrp \$ 2,300



MODEL 274 GAS PRESSURE REGULATOR

General Description

◇ Fixed Factor Billing for PFM applications—to maintain outlet pressure accuracy for applications that require downstream pressure to be held within $\pm 1\%$ absolute pressure

◇ Outlet pressures from 6" w.c. to 6 psig over 5 spring ranges. Set point can be adjusted easily with standard socket. Regulator top cap has the capability of including the provision for a wire seal.

◇ 1" threaded connection by screen removed vent extension.

◇ Reinforced phragm for speed of response and durability.

◇ Available capacity, no designs to regulator to discharge over pressure gas. Safety diaphragms also available.

◇ Cartridge style regulator diaphragm casing design so retrofitting new regulator casings is very easy without removing regulator body from the pipe-work.

◇ Under & Over Pressure Safety Slam-Shut Valve (UPCO/OPCO) options available

◇ Over Pressure Safety Slam-Shut Valve (OPCO) options available

Model 290-OPCO

greatest valves available to protect (UPCO) and over pressure (OPCO) the downstream pipe-work. Slam-shut also available with low differential off and thermal trip (T-type) protection shut gas off if regulator is engulfed

◇ Pressure test points available at inlet & outlet chambers of the body, as an option.

◇ Several available orifice diameters to accommodate a wide range of pressure conditions and flow require-

◇ 3 different pipe thread diameters available on an inline (180°) body designs. 1 1/4", 1 1/2" or 2" or 1" NPT, BSPT or BSPP

◇ 2" flanged connections available in ANSI 150 or PN 16 with flat

◇ Available with Internal Impulse or Control Line (I.C.L.) or External Impulse or Control Line Connections (E.C.L.)

◇ Available with integrated union fitting with o-ring seal for 100% bubble-tight seal on both inlet or outlet body connections to ease and reduce installation labor. Union available in standard or insulated versions.



BRYAN DONKIN RMG CANADA LIMITED

P.O. Box 1616, 50 Clarke Street South, Woodstock, Ontario, Canada N4S 0A8

Website: www.rmg.com Email: neil@bdrmgcanada.com

Installation & Commissioning Instructions

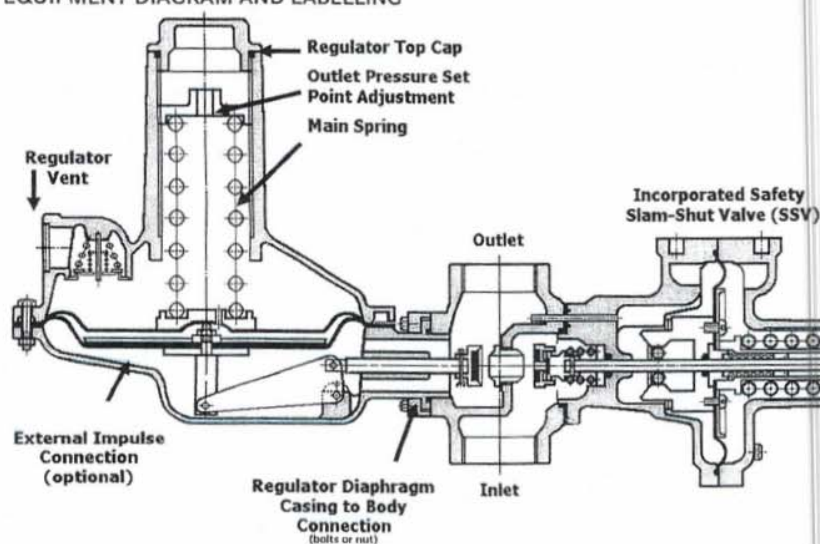
Product: REGULATOR WITHOUT RELIEF VALVE

Data Sheet No: CIC 900 1A

Issue Date: October 2006

GENERAL INFORMATION

EQUIPMENT DIAGRAM AND LABELLING



To open the gas valve unscrew, reverse & insert the cap to screw to the end of the valve shaft, then pull the valve back of the gas seat. If the valve keeps closing, call your gas man as you are getting way more than the 20psi

*To open valve
unscrew, reverse
& screw on to valve
shaft & pull out*

- Technical information will be found on the regulator adhesive label or metal badge usually on the main spring housing of the diaphragm casing
- Information - model number, factory outlet pressure setting, factory safety valve setting, orifice diameter, maximum recommended inlet pressure, serial number, etc.

REGULATOR INSTALLATION

1. Clean the inlet pipe-work to remove any moisture, dirt or debris that could damage the regulator or impair its operation; if possible, it is recommended that a filter be installed upstream of the regulator.
2. Check that the inlet pressure is not beyond the recommended maximum inlet pressure range of the regulator. More specifically, this is determined by the diameter of the orifice fitted in the regulator. This information is stated on the regulator adhesive label or found in the technical brochure published by the manufacturer.
3. Check the regulator for any damage and clean out the regulator body, if necessary.
4. Install the regulator within the pipe-work, using approved pipe sealant on the male pipe threads of the adjoining pipe only. The regulator can be fitted in any position or at any angle but the direction of the main spring will have a small effect on factory setting. In particular, pay specific attention to the following:



**Pipe with
slotted hole +
Big hole head
Required for
Natural Gas**

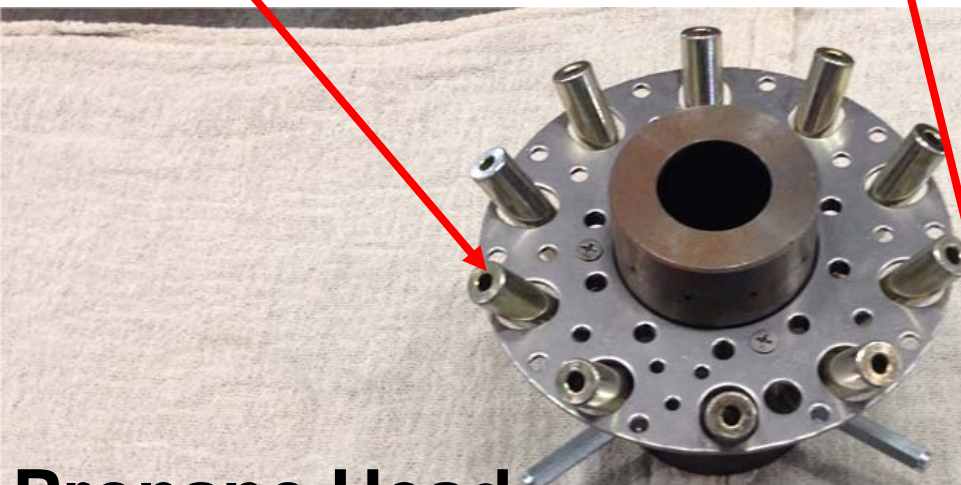


NAT GAS Head



Backside

**Small Hole head for Propane Gas Vapour
Longer pipe no slotted hole**



Propane Head



Backside

