

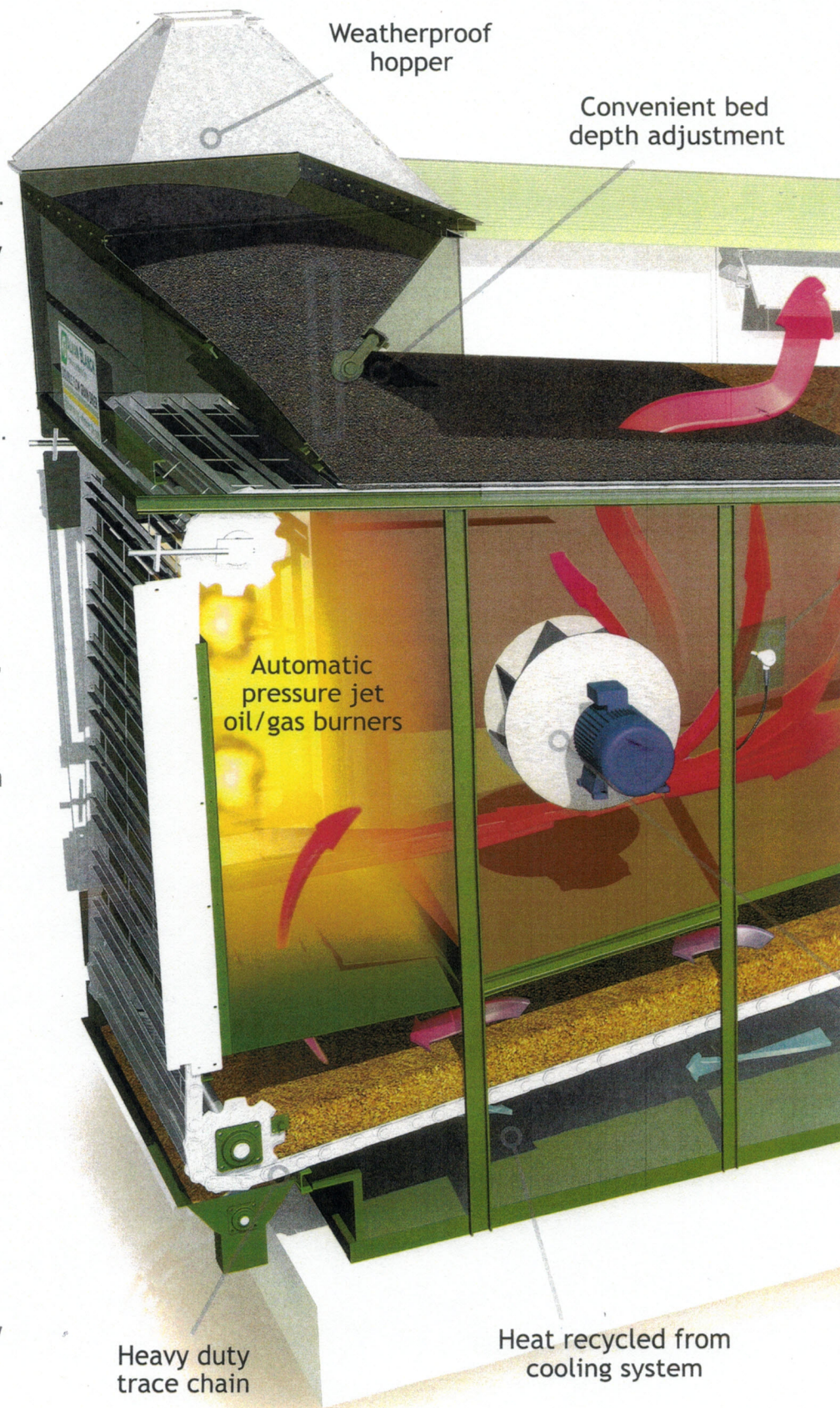
# Continuous Flow Grain Driers

The Highly Efficient, Uniquely Versatile and Environmentally-Friendly Grain Driers from Alvan Blanch

DAVE ROSS EQUIP. LTD.  
P.O. BOX 100 - RR33 - HWY49  
PH.780-834-8781 FAX.834-8483  
SPIRIT RIVER, AB T0H 5G0



# The UK's Best Selling Continuous Flow Grain Drier



**Unbeatable performance** - even at low temperatures (malt, seed etc.) thanks to a balanced air flow.

**Uniquely versatile. Will dry any granular crop, in any condition** - no need for pre-cleaning.

**Highly fuel efficient** - total recovery of waste heat from cooling section. Insulation options.

**Precise and consistent drying** - plus the mechanical flow avoids streaming, and complete bed inversion.

**No downtime between crops** - instant, electronically controlled, follow-on without need for emptying or refilling.

**Built to last** - proven construction with an anti-corrosion finish.

**Mechanical conveying** - all grains are moved within the drier, meaning no possibility of blockages or hot spots possible.

**Stepless auto speed control** - instant response for optimum accuracy.

**Minimal environmental impact** - low profile, low noise. Extra silencers and cladding available.

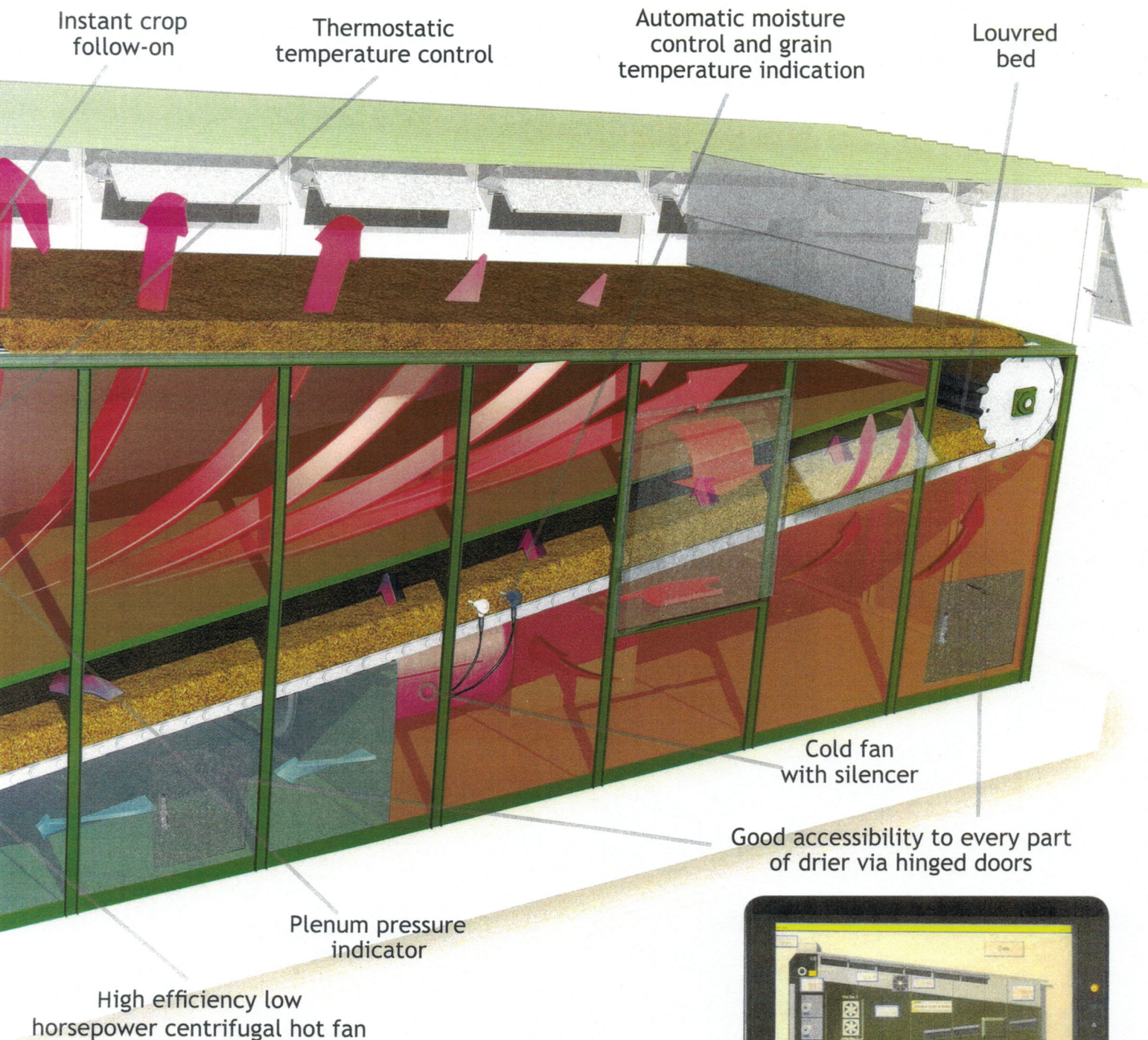
**Dust control systems.**

**Low installation cost** - mostly pre-assembled, pre-wired and low foundation costs.

**Dependability** - backed by 2 year warranty and worldwide support.



Now Radically Re-engineered & gives you these Unique Benefits:

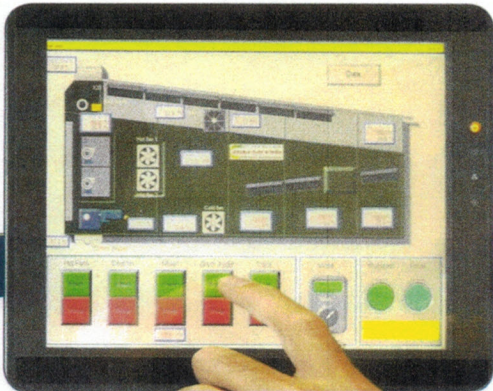


## Built-in Precision and Process Control

The amount of moisture taken out of the crop is accurately controlled. Once set to suit the crop, the process on Alvan Blanch driers does not change, resulting in precise drying.

### Complete flexibility

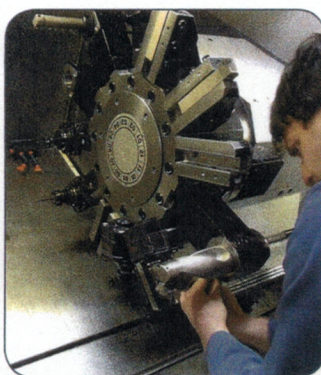
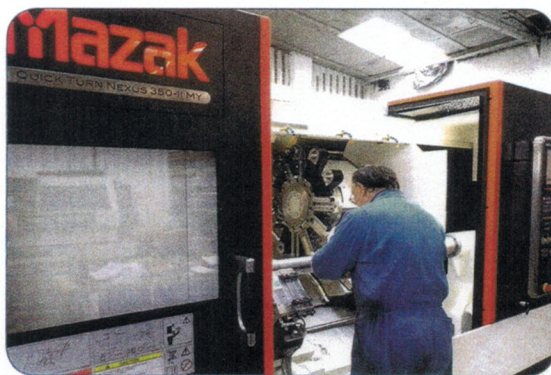
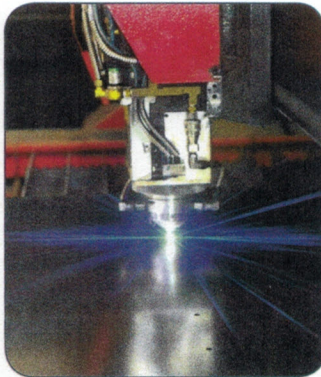
- 1) Variable bed depth up to 400mm
- 2) Variable stepless conveying chain speed
- 3) Variable heat input through oil/gas burners
- 4) Variable air flow speed. Light seed can be processed.



Optional PLC control panel with data recording



# Alvan Blanch Production



Specification for double flow grain driers barley, wheat, maize

Model	DF6000	DF9000	DF10500	DF12800	DF15200	DF15900	DF17655	DF19000	DF22000	DF25000	DF26500	DF30000	DF33500	DF37000	DF48000
Approx. Input capacity, barley 20% - 15%, t/h @100°C	6	9	11	14	16	17	19	21	24	28	29	33	37	41	53
Approx. Input capacity, wheat 20% - 15%, t/h @110°C	7	5	12	15	18	19	21	23	26	30	32	36	40.5	45	58
Approx. Input capacity, maize 25% - 15%, t/h @110°C	3	7	6	7	8	8.5	9	10	11	12.5	13.5	15	17	19	24.5
Approx. Input capacity, canola (rape oil seeds) 13% - 9%, t/h @60°C	4	76	8	9	11	11	12	14	16	18	19	21	24	27	36
Length, mm	6800	9200	8740	10000	11200	12500	12500	11200	12500	13650	12500	13650	15000	16200	19900
Width, mm	2300	2300	2600	2600	2600	2400	2600	3200	3200	3200	3850	3850	3850	3850	4000
Height, mm	4200	4200	4490	4914	5051	5140	5192	5192	5334	5334	5464	5604	5745	5885	7289
Discharge height under auger, mm		267	342	481	343	206	206	343	206	68	206	48	88	229	202
Max. Lift, kg	5000	5500	6000	7500	10000	10000	11000	12000	13000	14000	15000	16000	17500	23000	18000
Product on drier bed, kg Barley @300mm	4000	5000	6000	7500	8500	9000	10000	11000	12000	13200	14000	16000	18000	20000	24000
Hot fan, kW	1 x 11	1 x 15	1 x 15	1 x 22	1 x 22	1 x 30	1 x 30	1 x 30	1 x 37	1 x 45	2 x 30	2 x 30	2 x 37	2 x 37	2 x 45
Cold fan, kW	1 x 4	1 x 5.5	1 x 7.5	1 x 9.2	1 x 11	1 x 11	1 x 15	1 x 15	1 x 18.5	1 x 18.5	2 x 9.2	2 x 11	1 x 11, 1 x 15	2 x 15	1 x 37
Burner motor, kW	0.55	0.55	1.1	1.1	2 x 0.75	2 x 1.1	2 x 1.1	2 x 1.1	2 x 1.5	2 x 1.5	2 x 1.5	2 x 1.5	2 x 2.1	2 x 3.6	2 x 3.6
Trace drive, kW	0.18	0.37	0.55	0.55	0.75	0.75	0.75	0.75	0.75	1.1	1.5	1.5	1.5	1.5	2.2
Auger discharge, kW	1.5	1.5	1.5	1.5	1.5	1.5	1.5	1.5	1.5	1.5	1.5	1.5	1.5	2.2	3.0
Burner size, KW	500	500	800	1000	2 x 600	2 x 700	2 x 700	1 x 700, 1 x 1000	1 x 700, 1 x 1000	2 x 1000	2 x 1000	1 x 1000, 1 x 1200	2 x 1400	2 x 1700	2 x 2000

Throughput, thermal and electrical power values are approximate, and will vary depending on ambient conditions, product variation and drier set up. Models available for flaked grain drying; malt drying with boosted fans; all hot, where cooling is not required within the drier; mobile driers MDF10500 to MDF22000, and other options.

In accordance with our policy of continuous development, we reserve the right to change specifications and prices at any time without notice or incurring liability to purchasers. All goods supplied according to our published terms and conditions of sale (copies on application).