



Ross Equip. Ltd Since 1943

DAVE ROSS Equip. Ltd.

RR63-Hwy49 Box 100 Spirit River, Ab. TOH-3G0

Ph: 780-864-3731 Fax: 864-3468

1-800-661-7401

alross@rossequip.ca



Canada & USA Distributor AB Driers

Drier Efficiency history. Dave Ross Equip Ltd accepts no Liability for its acceptance by anyone.

FRONT & BURNER, SIDES, REAR & ROOF, Outdoor Superstructure & roof ENCLOSER \$ 29,600



UPDATE Old Ribbon burner \$ 2,500 to 2-Riello 6.4mbtu FUEL Efficient modulating BURNERS \$ 26,200. Run only 1 Burner in the Fall making the drier twice as efficient. \$ 23,700



Double Wall insulated fire box \$ 3,500
Update panel to modular control \$ 3,000



CSA APPROVED GAS TRAIN



2017-up 42kw, 57 hp VFD (Variable Speed) Single Hot Fan and 21 kw -28 hp VFD Cold Fan plus 1 hp VFD chain drive

\$ 15,800

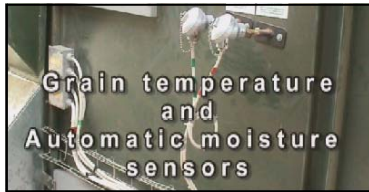
\$ 7,500

\$ 3,200

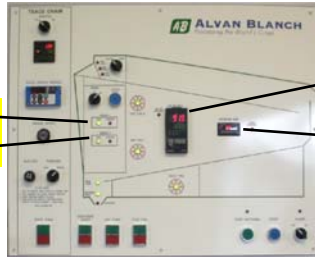
total \$ 26,500



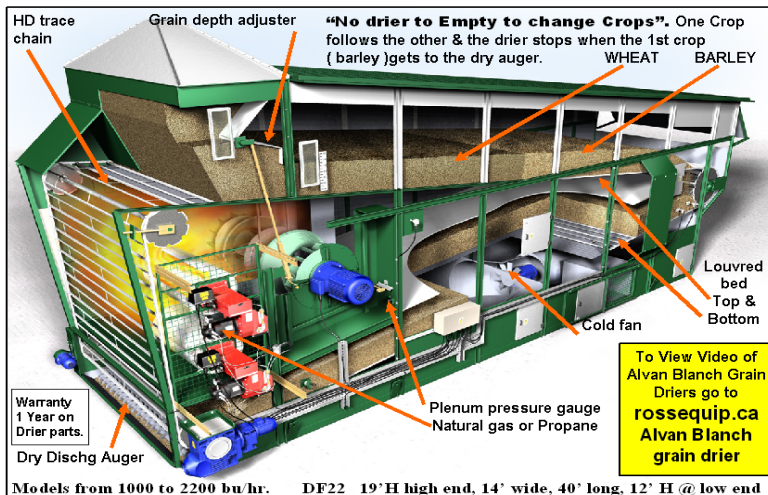
Automatic Moisture Control #1



Burner 1
Burner 2



Over heat lite #1 \$ 9,500
Plenum Temp in deg C
Shut down temp setting
Grain Temp in deg C
Shut down temp setting #2 \$ 8,500
Grain Temp over heat lite
Panel upgrade #2



Warranty 1 Year on Drier parts.

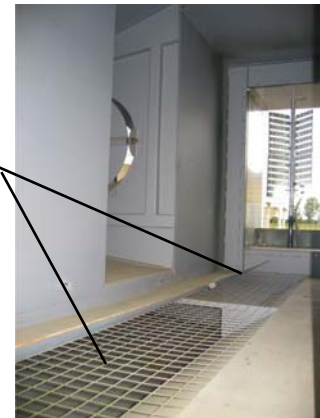
Dry Dischg Auger

Grain depth adjuster

"No drier to Empty to change Crops". One Crop follows the other & the drier stops when the 1st crop (barley) gets to the dry auger. WHEAT BARLEY

To View Video of Alvan Blanch Grain Driers go to rossequip.ca Alvan Blanch grain drier

Models from 1000 to 2200 bu/hr. DF22 19'H high end, 14' wide, 40' long, 12' H @ low end



#3 \$ 15,900

#4 \$ 17,500

TOTAL \$137,700

One Crop follows the other, no drier to Empty, HEAT is retained in the Drier when changing crops Redesigned increased the price \$17,500 #4

NEW Recycled hot air from grain cooling bed comes back to the fire box to be re heated & re used making the drier 25% more efficient. The drier had to be redesigned increasing the price \$15,900 #3