



# DAVE ROSS EQUIP. LTD

780-864-3731 Spirit River AL 864-0236  
Warren 864.0217 or Jay 978.0188

Dave Ross Equip. Ltd 83 Years Since 1943

June 13 2026



**FIRE KIT**  
275 gal Tank  
100' of hose +  
FIRE Nozzel  
20,000# rear  
HITCH  
Door, ladder  
to Grain  
Tank on all  
2000 bushel  
Grain Carts

2014 580 QT CASE P/S tran, 30"Tracks Tow cable  
2538hrs, Twin hyd pumps 98 gpm 6 hyd outlets  
power beyond, return coupler, B/T radio Deluxe  
susp Cab. Diff lock, Pro 700 Case Monitor with  
working Trimble GPS, Serviced ready for Spring  
2015 580 QT \$395,000 \$335,000 OBO

only 2 onhand



2022 GC1319 1300bu 520 scale, 1250/50/32  
1S3118 Tarp \$182,900-30% **\$129,000**  
SAME 2025 CART MSRP \$196,630



PTO

NEW 620 4wd Versatile 665hp @ 1900rpm, 16x4 Cat P/S  
tran rev-fan tow cable 900/60 R42 110gpm pump 6E hyd  
3/4" return diff lock PTO susp Del Cab Isobus Radar, Jake  
Brake, 19 Led lites, V6700 A/S/R Rear camera, #8R2689  
#59,800 SN708852 \$995,000 \$ 895,000

only 1 onhand

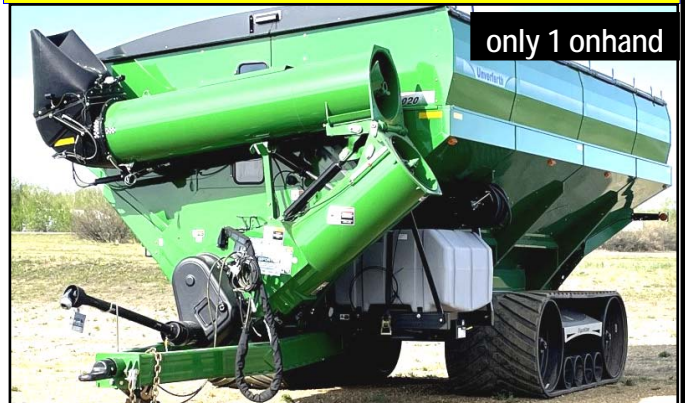


MY 2024 GC-2020 2000 bu, Unverferth grain cart 5F  
control 520 Scale 4-1050/50/32 Tires 2B5205 Tarp, 24"  
Vertical Auger, Hyd Jack, Rear 20,000# hitch, Rear  
access door, FIRE CONTROL 275 gal Tank, Hyd  
Pump, 100' hose and Fire Nozzel  
MSRP \$ 315,000 - 30% **\$221,000**



2011 535 4wd Versatile 535 hp, 16x4 Cat P/S tran,  
QSX15L Cummins, 850x60R dual tires 80gpm hyd,  
6E hyd remotes diff lock, Deluxe Cab, radar, Frtwts  
2911 hrs \$295,000 OBO call 780.864.8582

only 1 onhand



2024 GC-2020 2000 bu, 5Fct 520 Scale  
42"x148" Eql Track, Tarp, Rear hitch  
24" Auger, Hyd Jack, , 275 gal Water tank, 1S1269  
Hyd pump, reel nozzel 100' hose  
msrp \$ 408,000 - 30% **\$285,000**

**THIS IS THE LAST OF THE 30% DISCOUNT  
ON GRAIN CARTS FROM 2025  
THERE ARE NO FACTORY ORDERS  
AT THESE PRICES.  
A 10% Deposit will hold one to Aug 1-2026**